

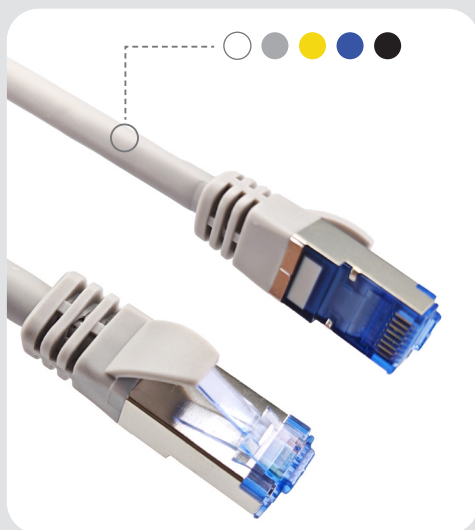
## Cat. 8 Patchkabel - Höchstleistungs-Ethernetkabel

### Cat. 8 Rundes Patchkabel

Unser rundes Cat. 8 Patchkabel bietet die neueste Technologie für extrem schnelle Datenübertragungen und maximale Leistung in modernen Netzwerken. Erhältlich in den Farben Weiß, Schwarz, Grau, Gelb und Blau, fügt es sich nahtlos in jede Umgebung ein und bietet gleichzeitig maximale Flexibilität und Robustheit.

Diese runden Kabel sind in den Längen 1, 2, 3, 5, 10 und 15 Metern erhältlich, perfekt für Anwendungen, die eine hohe physische Belastbarkeit und Stabilität erfordern. Mit Übertragungsgeschwindigkeiten von bis zu 40 Gbit/s und einer hervorragenden Abschirmung gegen elektromagnetische Störungen garantieren unsere runden Cat. 8 Kabel eine zuverlässige und störungsfreie Netzwerkverbindung.

Ideal für professionelle Netzwerke, anspruchsvolles Gaming und hochauflösendes Streaming—das Cat. 8 Rundkabel ist die optimale Wahl für eine stabile und langlebige Netzwerkverbindung.



Typ:	CAT8 FFTP
Länge:	1,2,3,5,10,15 Meter
Farbe:	Weiß, Schwarz, Grau, Gelb und Blau
Mantelmaterial:	LSZH
Anschluss:	A - RJ45 Plug, B - RJ45 Plug (8P8C)
Leitermaterial:	BC/ 26 AWG
Leistung:	Leicht, weich, abriebfest
Verkabelungsstandard:	EIA/TIA 568B
Kabeldurchmesser:	6.2 mm ± 0.2 mm
Adern Innenleiter Material:	Reines Kupfer
Datenübertragung:	40 Gbps (40000 MBit/s)
Impedanz:	max.2000MHz
Temperaturbereich:	-20°C bis 60°C

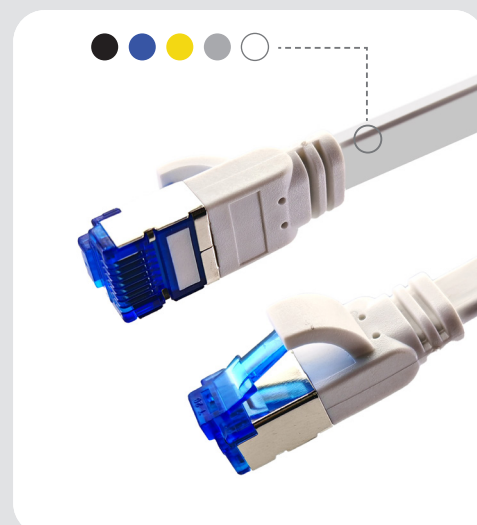
## Cat. 8 Flaches Patchkabel

Unser flaches Cat. 8 Patchkabel bietet die neueste Technologie für extrem schnelle Datenübertragungen und maximale Leistung, während es sich gleichzeitig perfekt in platzsparende Installationen integriert. In den Farben Weiß, Schwarz, Grau, Gelb und Blau erhältlich, ist dieses Kabel die ideale Lösung für diskrete und ästhetische Verkabelung.

Die flachen Kabel sind in den Längen 1, 2, 3, 5, 10 und 15 Metern verfügbar, ideal für enge Räume, unter Teppichen oder hinter Möbeln. Trotz ihres schlanken Designs bieten die Cat. 8 Kabel herausragende Geschwindigkeiten von bis zu 40 Gbit/s und gewährleisten dank ihrer exzellenten Abschirmung eine störungsfreie Netzwerkverbindung.

Perfekt geeignet für professionelle Netzwerke, anspruchsvolles Gaming und hochauflösendes Streaming—das Cat. 8 Flachkabel ist die ideale Lösung für platzsparende und leistungsstarke Netzwerkinstallation.

Typ:	CAT.7 UFTP
Länge:	1,2,3,5,10,15 Meter
Farbe:	Weiß, Schwarz, Grau, Gelb und Blau
Mantelmaterial:	LSZH
Anschluss:	A - RJ45 Plug, B - RJ45 Plug (8P8C)
Leitermaterial:	BC/ 30 AWG
Leistung:	Leicht, weich, abriebfest
Verkabelungsstandard:	EIA/TIA 568B
Kabeldurchmesser:	8.5 x 2.75 mm ± 0.2 mm
Adern Innenleiter Material:	Reines Kupfer
Datenübertragung:	40 Gbps (40000 MBit/s)
Impedanz:	max. 2000MHz
Temperaturbereich:	-20°C bis 60°C



Cable ID	Summary	Test Limit	Length	Headroom	Date / Time
CHANNEL-CAT8 FLAT TEST 01	PASS	TIA Cat 8 Channel	4 ft	17.9 dB (NEXT)	09/06/2024 05:17 PM
CHANNEL-CAT8 FLAT TEST 02	PASS	TIA Cat 8 Channel	7 ft	12.5 dB (NEXT)	09/06/2024 05:18 PM
CHANNEL-CAT8 FLAT TEST 03	PASS	TIA Cat 8 Channel	11 ft	17.2 dB (NEXT)	09/06/2024 05:19 PM
CHANNEL-CAT8 FLAT TEST 04	PASS	TIA Cat 8 Channel	18 ft	14.4 dB (NEXT)	09/06/2024 05:20 PM
CHANNEL-CAT8 FLAT TEST 05	PASS	TIA Cat 8 Channel	35 ft	11.0 dB (NEXT)	09/06/2024 05:36 PM
CHANNEL CAT8 FLAT TEST 06	PASS	TIA Cat 8 Channel	52 ft	12.1 dB (NEXT)	09/06/2024 07:51 PM

Total Length:	127 ft
Number of Reports:	6
Number of Passing Reports:	6
Number of Failing Reports:	0
Number of Warning Reports:	0
Documentation Only:	0



**Cable ID: CHANNEL-CAT8 FLAT TEST 01**

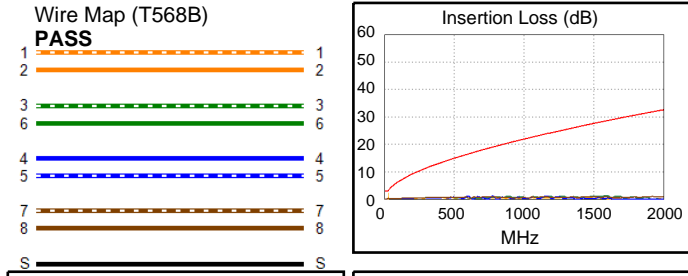
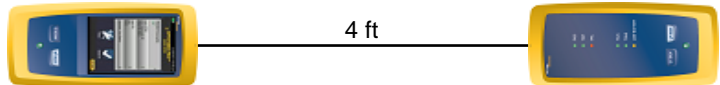
**Test Summary: PASS**

Test Limit: TIA Cat 8 Channel  
Limits Version: V7.9  
Date / Time: 09/06/2024 05:17:21 PM  
Operator: Wider Cable  
**Headroom 17.9 dB (NEXT 1,2-3,6)**  
Cable Type: Cat 8 S/FTP  
NVP: 72.0%

Main: Versiv  
S/N: 18310205  
Software Version: V6.11 Build 2  
Calibration Date: 12/05/2022  
Adapter: DSX-8000 (DSX-CHA804)  
S/N: 22210272

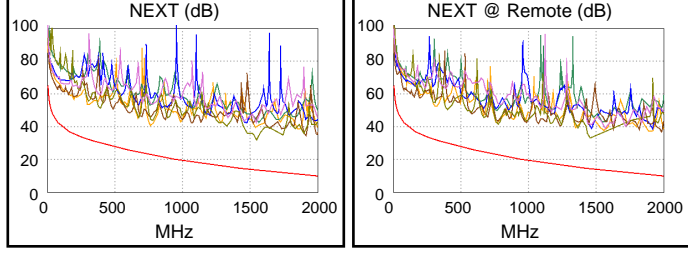
Remote: Versiv  
S/N: 18310214  
Software Version: V6.11 Build 2  
Calibration Date: 12/05/2022  
Adapter: DSX-8000R (DSX-CHA804)  
S/N: 22210268

Length (ft), Limit 98	[Pair 4,5]	4
Prop. Delay (ns), Limit 179	[Pair 1,2]	6
Delay Skew (ns), Limit 17	[Pair 1,2]	1
Resistance (ohms), Limit 6.40	[Pair 4,5]	0.66
Insertion Loss Margin (dB)	[Pair 3,6]	27.3
Frequency (MHz)	[Pair 3,6]	1600.0
Limit (dB)	[Pair 3,6]	28.7

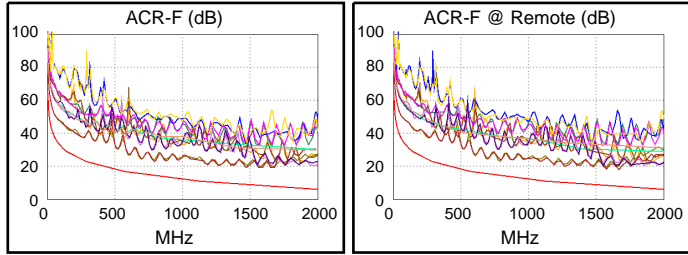


Worst Case Margin Worst Case Value

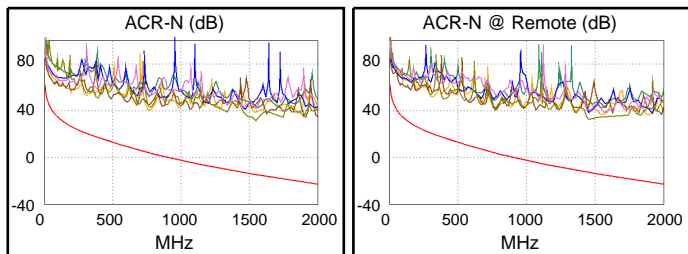
PASS	MAIN	SR	MAIN	SR
Worst Pair	1,2-3,6	3,6-7,8	3,6-7,8	3,6-7,8
<b>NEXT (dB)</b>	17.9	18.7	18.5	18.8
Freq. (MHz)	760.0	1458.	1548.	1460.
Limit (dB)	22.8	14.3	13.4	14.2
Worst Pair	3,6	3,6	3,6	7,8
<b>PS NEXT (dB)</b>	18.5	17.8	20.3	19.9
Freq. (MHz)	762.0	766.0	1546.	1460.
Limit (dB)	19.9	19.8	10.8	11.6



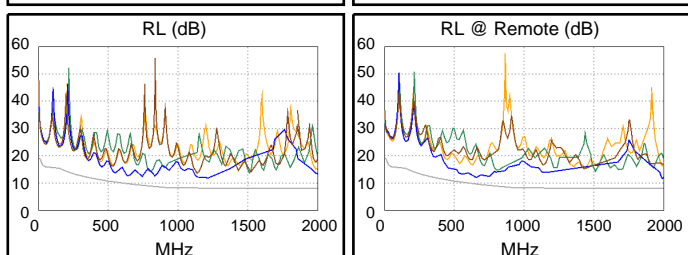
PASS	MAIN	SR	MAIN	SR
Worst Pair	4,5-3,6	3,6-4,5	4,5-3,6	4,5-3,6
<b>ACR-F (dB)</b>	8.9	8.9	10.2	10.3
Freq. (MHz)	793.0	786.0	1576.	1672.
Limit (dB)	14.0	14.1	8.0	7.5
Worst Pair	3,6	3,6	3,6	3,6
<b>PS ACR-F (dB)</b>	11.0	10.9	11.7	10.9
Freq. (MHz)	793.0	1668.	1668.	1668.
Limit (dB)	11.0	4.5	4.5	4.5



N/A	MAIN	SR	MAIN	SR
Worst Pair	3,6-4,5	3,6-4,5	3,6-7,8	3,6-7,8
<b>ACR-N (dB)</b>	24.0	23.8	45.9	45.3
Freq. (MHz)	7.8	15.5	1544.	1460.
Limit (dB)	56.1	51.2	-14.7	-13.0
Worst Pair	3,6	3,6	3,6	7,8
<b>PS ACR-N (dB)</b>	25.7	26.2	47.2	46.5
Freq. (MHz)	7.8	23.5	1546.	1460.
Limit (dB)	52.8	44.7	-17.3	-15.7



N/A	MAIN	SR	MAIN	SR
Worst Pair	4,5	4,5	4,5	4,5
<b>RL (dB)</b>	2.7	2.0	3.1	3.7
Freq. (MHz)	635.0	639.0	1246.	1992.
Limit (dB)	9.8	9.8	8.0	8.0



Compliant Network Standards:  
 10BASE-T      100BASE-TX      100BASE-T4  
 1000BASE-T    2.5GBASE-T      5GBASE-T  
 10GBASE-T    25GBASE-T      40GBASE-T  
 ATM-25        ATM-51            ATM-155  
 100VG-AnyLan    TR-4              TR-16 Active  
 TR-16 Passive



### Cable ID: CHANNEL-CAT8 FLAT TEST 02

Test Limit: TIA Cat 8 Channel

Limits Version: V7.9

Date / Time: 09/06/2024 05:18:50 PM

Operator: Wider Cable

Headroom 12.5 dB (NEXT 1,2-3,6)

Cable Type: Cat 8 S/FTP

NVP: 72.0%

Main: Versiv

S/N: 18310205

Software Version: V6.11 Build 2

Calibration Date: 12/05/2022

Adapter: DSX-8000 (DSX-CHA804)

S/N: 22210272

Remote: Versiv

S/N: 18310214

Software Version: V6.11 Build 2

Calibration Date: 12/05/2022

Adapter: DSX-8000R (DSX-CHA804)

S/N: 22210268

**Test Summary: PASS**

Length (ft), Limit 98	[Pair 1,2]	7
Prop. Delay (ns), Limit 179	[Pair 1,2]	10
Delay Skew (ns), Limit 17	[Pair 7,8]	1
Resistance (ohms), Limit 6.40	[Pair 3,6]	1.30
Insertion Loss Margin (dB)	[Pair 3,6]	25.4
Frequency (MHz)	[Pair 3,6]	1668.0
Limit (dB)	[Pair 3,6]	29.4

Worst Case Margin Worst Case Value

PASS	MAIN	SR	MAIN	SR
Worst Pair	1,2-3,6	1,2-3,6	1,2-3,6	1,2-3,6
<b>NEXT (dB)</b>	14.2	12.5	17.2	17.5
Freq. (MHz)	192.5	96.5	1194.	1254.
Limit (dB)	35.6	40.8	17.0	16.3
Worst Pair	3,6	3,6	3,6	1,2
<b>PS NEXT (dB)</b>	17.1	15.3	19.4	20.1
Freq. (MHz)	192.0	96.5	1194.	1254.
Limit (dB)	32.2	37.3	14.2	13.6

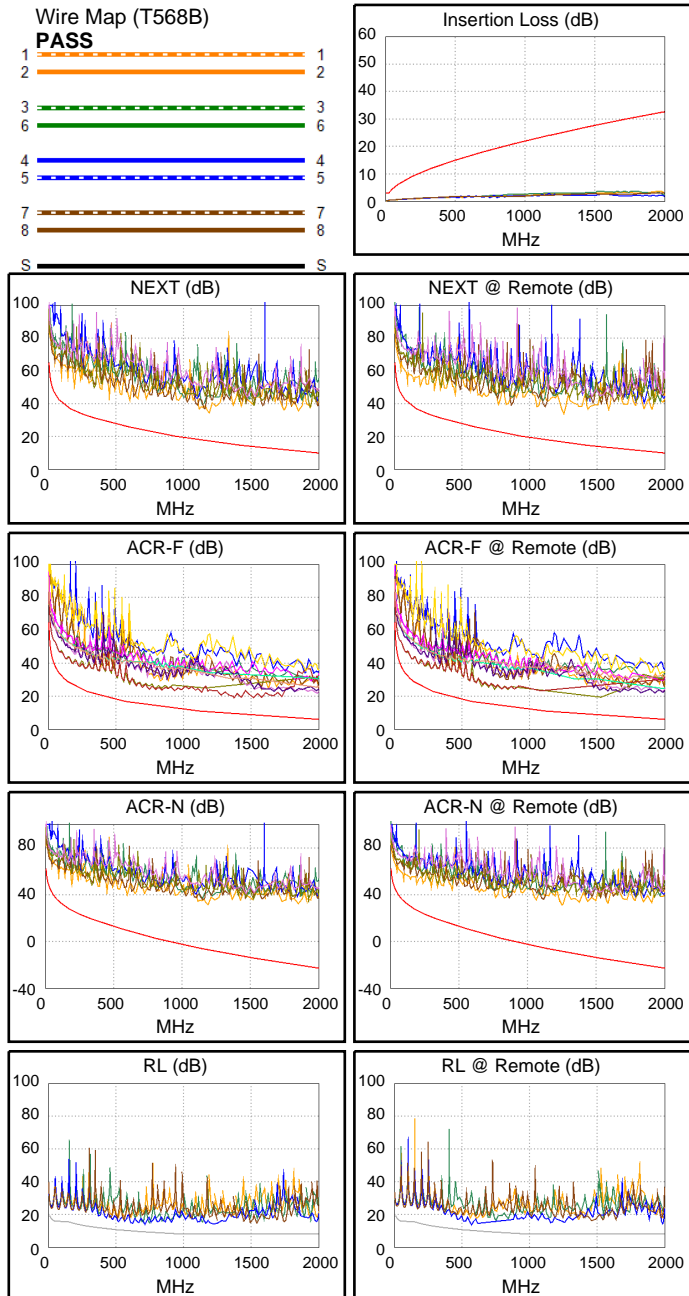
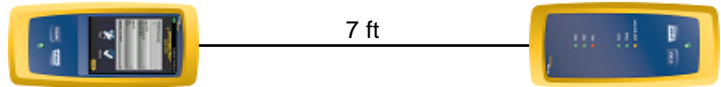
PASS	MAIN	SR	MAIN	SR
Worst Pair	4,5-3,6	3,6-4,5	4,5-3,6	4,5-3,6
<b>ACR-F (dB)</b>	9.4	9.6	9.8	10.1
Freq. (MHz)	742.0	740.0	1526.	1578.
Limit (dB)	14.6	14.6	8.3	8.0
Worst Pair	3,6	3,6	3,6	3,6
<b>PS ACR-F (dB)</b>	11.5	11.0	11.6	11.0
Freq. (MHz)	1526.	1578.	1624.	1578.
Limit (dB)	5.3	5.0	4.8	5.0

N/A	MAIN	SR	MAIN	SR
Worst Pair	1,2-3,6	1,2-3,6	1,2-3,6	1,2-3,6
<b>ACR-N (dB)</b>	20.9	18.0	51.7	39.9
Freq. (MHz)	96.5	47.3	1862.	1254.
Limit (dB)	34.4	41.6	-20.5	-8.7
Worst Pair	3,6	3,6	3,6	1,2
<b>PS ACR-N (dB)</b>	23.1	20.0	53.7	42.4
Freq. (MHz)	47.0	47.3	1862.	1254.
Limit (dB)	38.3	38.2	-23.0	-11.4

PASS	MAIN	SR	MAIN	SR
Worst Pair	7,8	7,8	4,5	4,5
<b>RL (dB)</b>	7.6	9.1	5.2	4.2
Freq. (MHz)	1536.	1536.	1264.	761.0
Limit (dB)	8.0	8.0	8.0	9.1

Compliant Network Standards:

10BASE-T	100BASE-TX	100BASE-T4
1000BASE-T	2.5GBASE-T	5GBASE-T
10GBASE-T	25GBASE-T	40GBASE-T
ATM-25	ATM-51	ATM-155
100VG-AnyLan	TR-4	TR-16 Active
TR-16 Passive		





**Cable ID: CHANNEL-CAT8 FLAT TEST 03**

Test Limit: TIA Cat 8 Channel

Limits Version: V7.9

Date / Time: 09/06/2024 05:19:26 PM

Operator: Wider Cable

Headroom 17.2 dB (NEXT 3,6-7,8)

Cable Type: Cat 8 S/FTP

NVP: 72.0%

Main: Versiv

S/N: 18310205

Software Version: V6.11 Build 2

Calibration Date: 12/05/2022

Adapter: DSX-8000 (DSX-CHA804)

S/N: 22210272

**Test Summary: PASS**

Remote: Versiv

S/N: 18310214

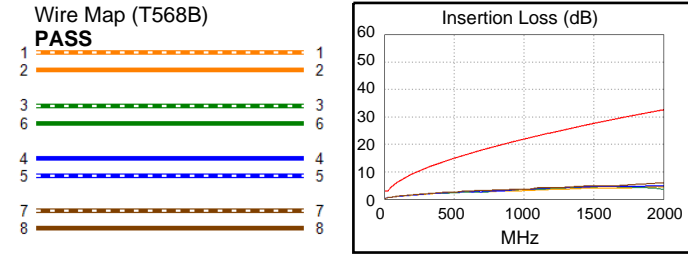
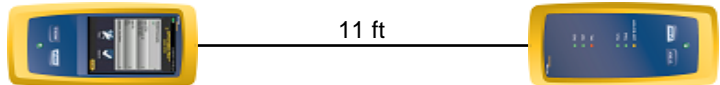
Software Version: V6.11 Build 2

Calibration Date: 12/05/2022

Adapter: DSX-8000R (DSX-CHA804)

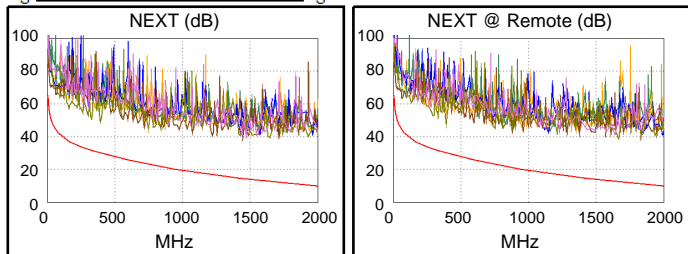
S/N: 22210268

Length (ft), Limit 98	[Pair 1,2]	11
Prop. Delay (ns), Limit 179	[Pair 1,2]	16
Delay Skew (ns), Limit 17	[Pair 1,2]	0
Resistance (ohms), Limit 6.40	[Pair 7,8]	2.06
Insertion Loss Margin (dB)	[Pair 7,8]	26.5
Frequency (MHz)	[Pair 7,8]	1984.0
Limit (dB)	[Pair 7,8]	32.5

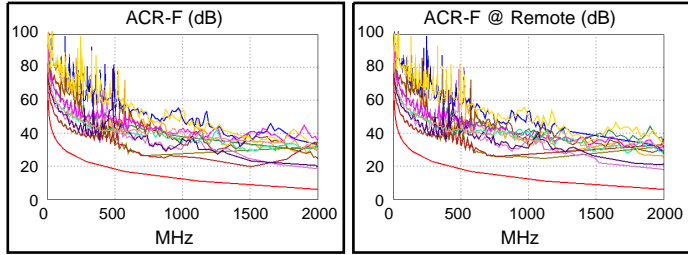


Worst Case Margin Worst Case Value

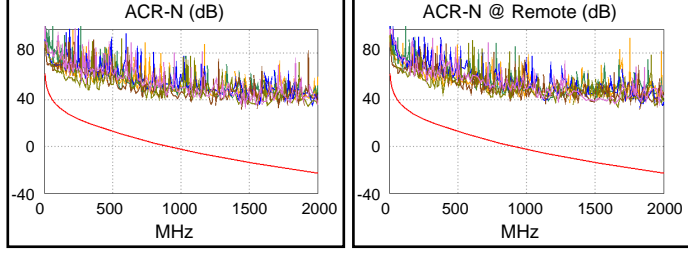
PASS	MAIN	SR	MAIN	SR
Worst Pair	3,6-4,5	3,6-7,8	3,6-7,8	3,6-7,8
<b>NEXT (dB)</b>	18.4	17.2	25.4	26.2
Freq. (MHz)	19.9	391.0	1650.	1666.
Limit (dB)	52.4	30.3	12.5	12.4
Worst Pair	3,6	3,6	7,8	3,6
<b>PS NEXT (dB)</b>	21.1	19.9	26.0	28.9
Freq. (MHz)	19.5	391.0	1554.	1954.
Limit (dB)	49.2	26.7	10.8	7.7



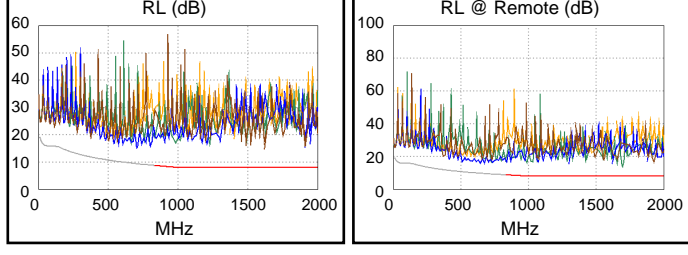
PASS	MAIN	SR	MAIN	SR
Worst Pair	4,5-3,6	3,6-4,5	3,6-7,8	3,6-7,8
<b>ACR-F (dB)</b>	10.9	10.8	12.2	11.3
Freq. (MHz)	1514.	1514.	1944.	1922.
Limit (dB)	8.4	8.4	6.2	6.3
Worst Pair	3,6	3,6	3,6	7,8
<b>PS ACR-F (dB)</b>	12.2	13.2	12.8	14.2
Freq. (MHz)	1514.	1606.	1658.	2000.
Limit (dB)	5.4	4.9	4.6	2.9



N/A	MAIN	SR	MAIN	SR
Worst Pair	3,6-4,5	3,6-4,5	3,6-7,8	3,6-7,8
<b>ACR-N (dB)</b>	20.9	20.7	49.7	50.8
Freq. (MHz)	19.9	19.6	1650.	1666.
Limit (dB)	49.4	49.5	-16.7	-17.0
Worst Pair	3,6	3,6	7,8	7,8
<b>PS ACR-N (dB)</b>	23.6	23.3	49.4	54.4
Freq. (MHz)	19.5	19.5	1554.	1832.
Limit (dB)	46.2	46.2	-17.5	-22.5



PASS	MAIN	SR	MAIN	SR
Worst Pair	4,5	3,6	4,5	3,6
<b>RL (dB)</b>	5.8	5.6	5.8	5.6
Freq. (MHz)	706.0	1694.	706.0	1694.
Limit (dB)	9.4	8.0	9.4	8.0



Compliant Network Standards:  
 10BASE-T 100BASE-TX 100BASE-T4  
 1000BASE-T 2.5GBASE-T 5GBASE-T  
 10GBASE-T 25GBASE-T 40GBASE-T  
 ATM-25 ATM-51 ATM-155  
 100VG-AnyLan TR-4 TR-16 Active  
 TR-16 Passive



**Cable ID: CHANNEL-CAT8 FLAT TEST 04**

Test Limit: TIA Cat 8 Channel

Limits Version: V7.9

Date / Time: 09/06/2024 05:20:06 PM

Operator: Wider Cable

Headroom 14.4 dB (NEXT 3,6-4,5)

Cable Type: Cat 8 S/FTP

NVP: 72.0%

Main: Versiv

S/N: 18310205

Software Version: V6.11 Build 2

Calibration Date: 12/05/2022

Adapter: DSX-8000 (DSX-CHA804)

S/N: 22210272

**Test Summary: PASS**

Remote: Versiv

S/N: 18310214

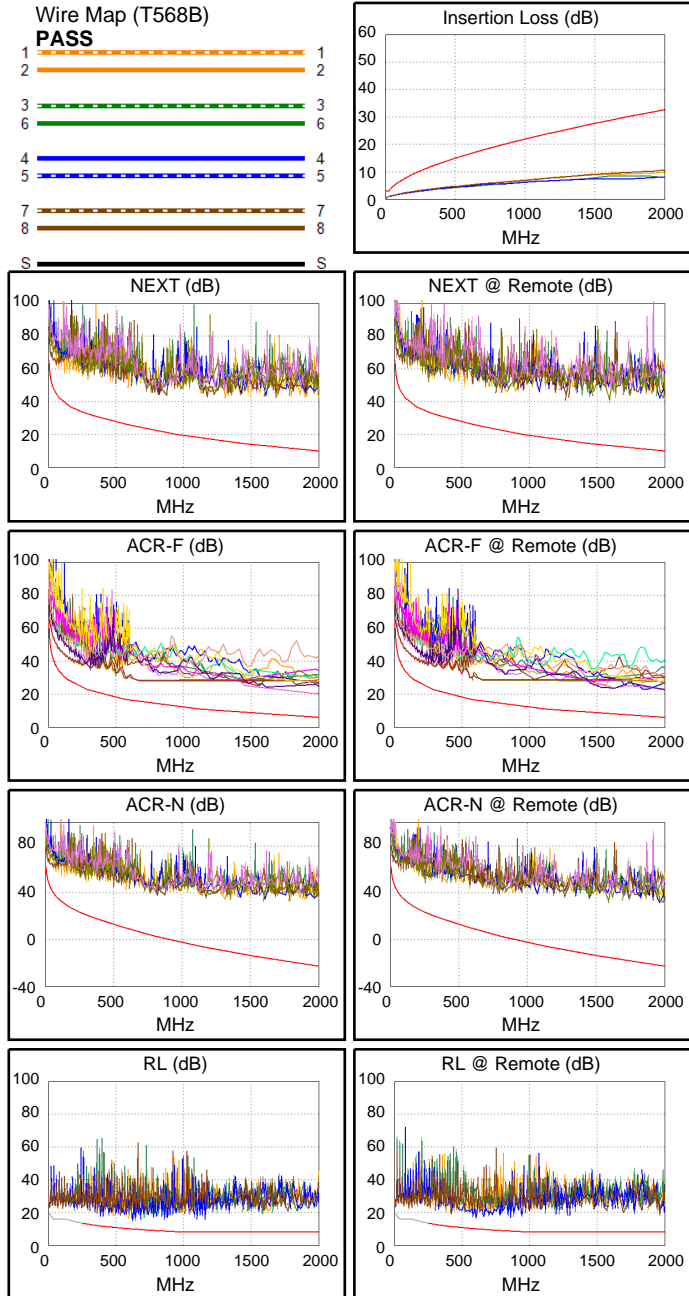
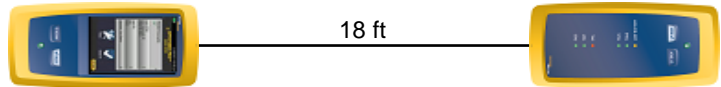
Software Version: V6.11 Build 2

Calibration Date: 12/05/2022

Adapter: DSX-8000R (DSX-CHA804)

S/N: 22210268

Length (ft), Limit 98	[Pair 1,2]	18
Prop. Delay (ns), Limit 179	[Pair 7,8]	26
Delay Skew (ns), Limit 17	[Pair 1,2]	0
Resistance (ohms), Limit 6.40	[Pair 1,2]	3.26
Insertion Loss Margin (dB)	[Pair 7,8]	21.8
Frequency (MHz)	[Pair 7,8]	1976.0
Limit (dB)	[Pair 7,8]	32.5



Worst Case Margin Worst Case Value

PASS	MAIN	SR	MAIN	SR
Worst Pair	3,6-4,5	3,6-4,5	1,2-3,6	3,6-7,8
<b>NEXT (dB)</b>	14.4	15.9	26.0	28.2
Freq. (MHz)	12.8	12.4	1314.	1592.
Limit (dB)	55.6	55.8	15.7	13.0
Worst Pair	3,6	3,6	3,6	7,8
<b>PS NEXT (dB)</b>	16.8	18.9	27.5	32.3
Freq. (MHz)	13.6	12.5	1310.	1966.
Limit (dB)	51.8	52.4	13.0	7.6

PASS	MAIN	SR	MAIN	SR
Worst Pair	4,5-3,6	3,6-4,5	3,6-7,8	3,6-7,8
<b>ACR-F (dB)</b>	11.8	11.5	14.3	16.4
Freq. (MHz)	701.0	703.0	2000.	2000.
Limit (dB)	15.1	15.0	5.9	5.9
Worst Pair	3,6	3,6	7,8	3,6
<b>PS ACR-F (dB)</b>	14.4	14.0	15.8	14.9
Freq. (MHz)	767.0	794.0	1976.	1570.
Limit (dB)	11.3	11.0	3.1	5.0

N/A	MAIN	SR	MAIN	SR
Worst Pair	3,6-4,5	3,6-4,5	1,2-7,8	1,2-7,8
<b>ACR-N (dB)</b>	16.6	18.2	56.1	53.7
Freq. (MHz)	12.8	13.0	1958.	1960.
Limit (dB)	52.6	52.4	-22.1	-22.2
Worst Pair	3,6	3,6	1,2	7,8
<b>PS ACR-N (dB)</b>	19.0	21.1	55.5	54.1
Freq. (MHz)	13.6	12.5	1900.	1966.
Limit (dB)	48.8	49.4	-23.7	-24.8

PASS	MAIN	SR	MAIN	SR
Worst Pair	4,5	4,5	4,5	4,5
<b>RL (dB)</b>	5.7	7.0	5.7	7.0
Freq. (MHz)	621.0	604.0	621.0	604.0
Limit (dB)	9.9	10.0	9.9	10.0

Compliant Network Standards:  
 10BASE-T      100BASE-TX      100BASE-T4  
 1000BASE-T    2.5GBASE-T      5GBASE-T  
 10GBASE-T    25GBASE-T      40GBASE-T  
 ATM-25        ATM-51            ATM-155  
 100VG-AnyLan    TR-4              TR-16 Active  
 TR-16 Passive



### Cable ID: CHANNEL-CAT8 FLAT TEST 05

Test Limit: TIA Cat 8 Channel

Limits Version: V7.9

Date / Time: 09/06/2024 05:36:32 PM

Operator: Wider Cable

Headroom 11.0 dB (NEXT 3,6-4,5)

Cable Type: Cat 8 S/FTP

NVP: 72.0%

Main: Versiv

S/N: 18310205

Software Version: V6.11 Build 2

Calibration Date: 12/05/2022

Adapter: DSX-8000 (DSX-CHA804)

S/N: 22210272

### Test Summary: PASS

Remote: Versiv

S/N: 18310214

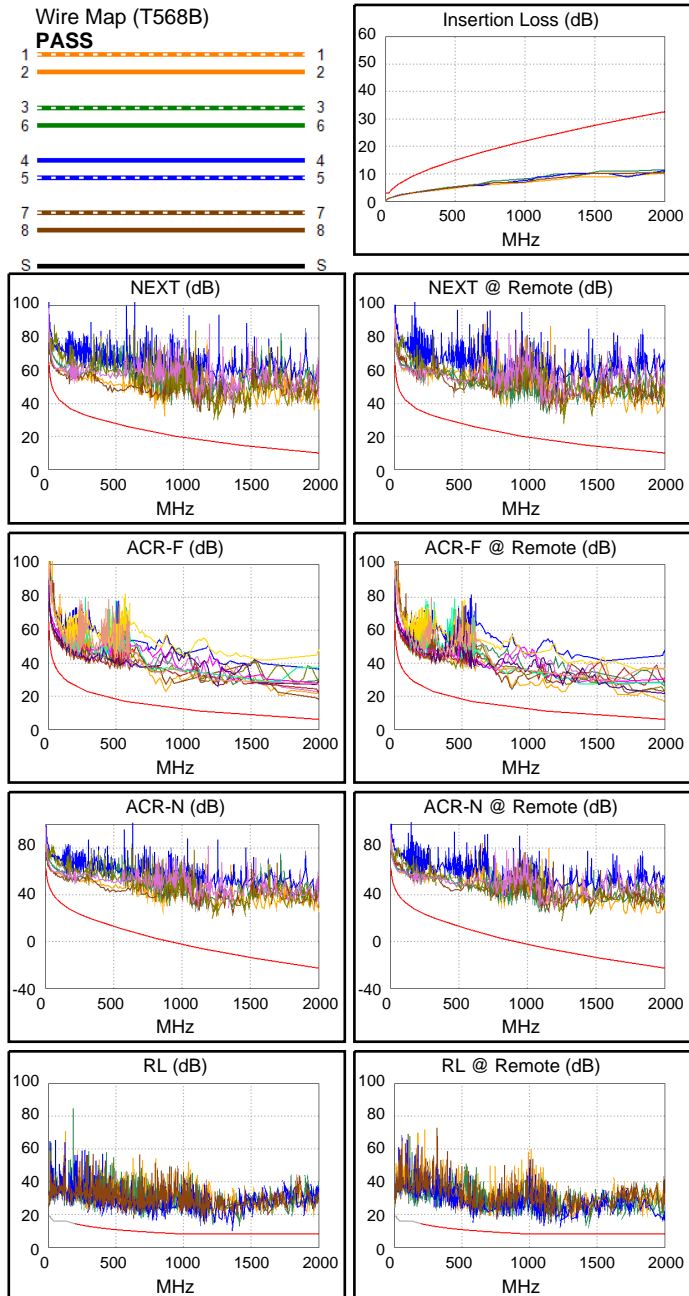
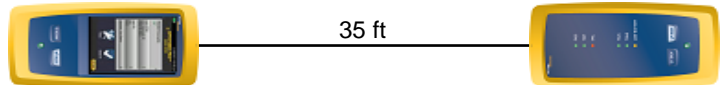
Software Version: V6.11 Build 2

Calibration Date: 12/05/2022

Adapter: DSX-8000R (DSX-CHA804)

S/N: 22210268

Length (ft), Limit 98	[Pair 1,2]	35
Prop. Delay (ns), Limit 179	[Pair 3,6]	51
Delay Skew (ns), Limit 17	[Pair 3,6]	1
Resistance (ohms), Limit 6.40	[Pair 3,6]	1.82
Insertion Loss Margin (dB)	[Pair 3,6]	20.1
Frequency (MHz)	[Pair 3,6]	1942.0
Limit (dB)	[Pair 3,6]	32.1



Worst Case Margin Worst Case Value

PASS	MAIN	SR	MAIN	SR
Worst Pair	3,6-4,5	3,6-7,8	3,6-7,8	3,6-7,8
<b>NEXT (dB)</b>	11.0	14.5	16.4	14.5
Freq. (MHz)	7.4	1254.	1254.	1254.
Limit (dB)	59.5	16.3	16.3	16.3
Worst Pair	4,5	3,6	3,6	3,6
<b>PS NEXT (dB)</b>	13.1	14.1	17.2	14.1
Freq. (MHz)	7.4	1254.	1254.	1254.
Limit (dB)	56.2	13.6	13.6	13.6

PASS	MAIN	SR	MAIN	SR
Worst Pair	1,2-3,6	1,2-3,6	3,6-1,2	1,2-3,6
<b>ACR-F (dB)</b>	9.5	10.8	11.9	10.9
Freq. (MHz)	869.0	1998.	2000.	2000.
Limit (dB)	13.2	6.0	5.9	5.9
Worst Pair	3,6	3,6	1,2	3,6
<b>PS ACR-F (dB)</b>	12.3	12.3	14.4	12.3
Freq. (MHz)	869.0	1998.	2000.	1998.
Limit (dB)	10.2	3.0	2.9	3.0

N/A	MAIN	SR	MAIN	SR
Worst Pair	3,6-4,5	3,6-4,5	3,6-4,5	3,6-7,8
<b>ACR-N (dB)</b>	13.4	17.2	34.8	30.6
Freq. (MHz)	7.4	7.8	1370.	1254.
Limit (dB)	56.5	56.1	-11.1	-8.7
Worst Pair	4,5	4,5	3,6	3,6
<b>PS ACR-N (dB)</b>	15.5	17.3	31.5	28.4
Freq. (MHz)	17.0	17.0	1254.	1254.
Limit (dB)	47.2	47.2	-11.4	-11.4

PASS	MAIN	SR	MAIN	SR
Worst Pair	4,5	3,6	4,5	3,6
<b>RL (dB)</b>	5.1	6.0	5.1	6.0
Freq. (MHz)	1362.	1416.	1362.	1416.
Limit (dB)	8.0	8.0	8.0	8.0

Compliant Network Standards:

10BASE-T	100BASE-TX	100BASE-T4
1000BASE-T	2.5GBASE-T	5GBASE-T
10GBASE-T	25GBASE-T	40GBASE-T
ATM-25	ATM-51	ATM-155
100VG-AnyLan	TR-4	TR-16 Active
TR-16 Passive		





**Cable ID: CHANNEL CAT8 FLAT TEST 06**

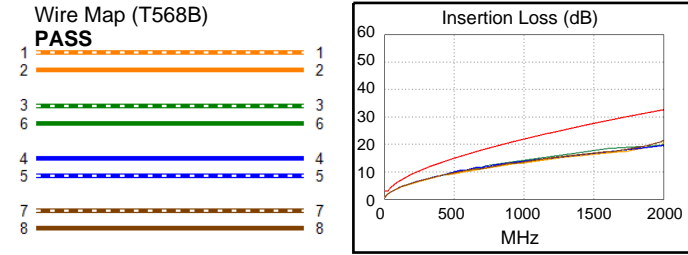
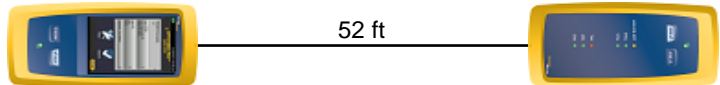
**Test Summary: PASS**

**Test Limit: TIA Cat 8 Channel**  
Limits Version: V7.9  
Date / Time: 09/06/2024 07:51:20 PM  
Operator: Wider Cable  
**Headroom 12.1 dB (NEXT 3,6-4,5)**  
Cable Type: Cat 8 S/FTP  
NVP: 72.0%

Main: Versiv  
S/N: 18310205  
Software Version: V6.11 Build 2  
Calibration Date: 12/05/2022  
Adapter: DSX-8000 (DSX-CHA804)  
S/N: 22210268

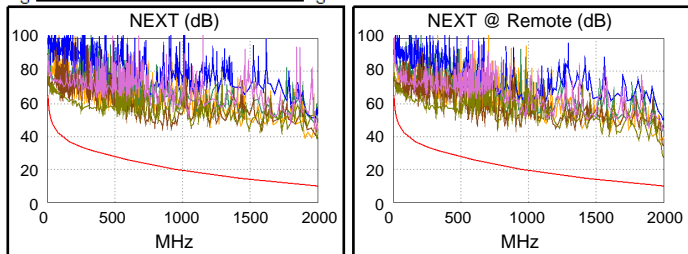
Remote: Versiv  
S/N: 18310214  
Software Version: V6.11 Build 2  
Calibration Date: 12/05/2022  
Adapter: DSX-8000R (DSX-CHA804)  
S/N: 22210272

Length (ft), Limit 98	[Pair 1,2]	52
Prop. Delay (ns), Limit 179	[Pair 1,2]	73
Delay Skew (ns), Limit 17	[Pair 1,2]	0
Resistance (ohms), Limit 6.40	[Pair 1,2]	4.35
Insertion Loss Margin (dB)	[Pair 7,8]	11.3
Frequency (MHz)	[Pair 7,8]	2000.0
Limit (dB)	[Pair 7,8]	32.7

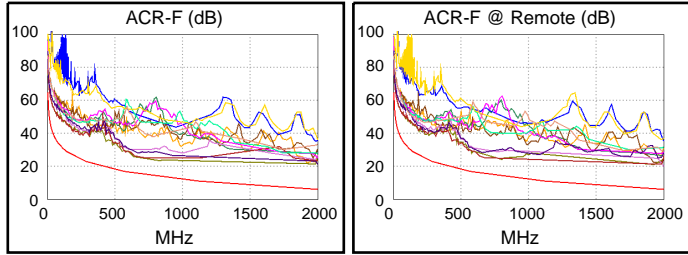


Worst Case Margin Worst Case Value

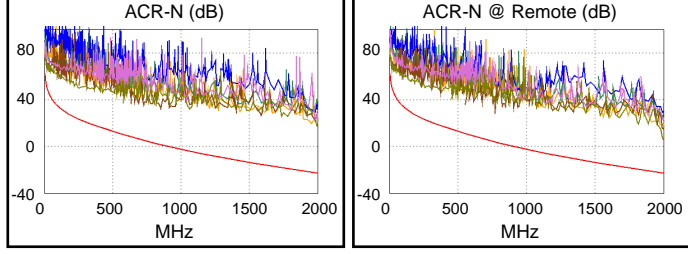
PASS	MAIN	SR	MAIN	SR
Worst Pair	3,6-4,5	3,6-4,5	1,2-3,6	3,6-7,8
<b>NEXT (dB)</b>	12.1	12.2	27.7	17.6
Freq. (MHz)	4.8	5.1	1962.	2000.
Limit (dB)	62.6	62.1	10.1	9.8
Worst Pair	3,6	3,6	3,6	3,6
<b>PS NEXT (dB)</b>	13.5	13.4	29.0	19.1
Freq. (MHz)	5.0	5.3	1962.	2000.
Limit (dB)	59.0	58.6	7.6	7.3



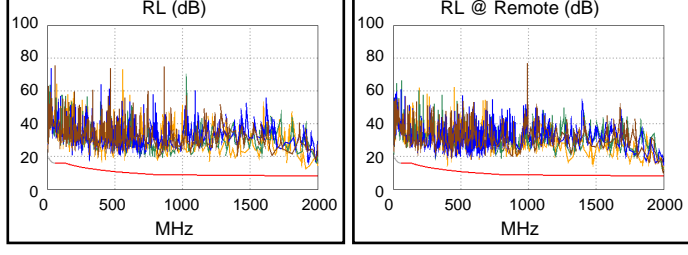
PASS	MAIN	SR	MAIN	SR
Worst Pair	3,6-4,5	4,5-3,6	3,6-4,5	3,6-7,8
<b>ACR-F (dB)</b>	9.2	8.5	14.0	14.1
Freq. (MHz)	820.0	817.0	1972.	2000.
Limit (dB)	13.7	13.7	6.1	5.9
Worst Pair	3,6	3,6	3,6	3,6
<b>PS ACR-F (dB)</b>	11.1	10.8	13.9	14.6
Freq. (MHz)	785.0	817.0	1932.	1970.
Limit (dB)	11.1	10.7	3.2	3.1



N/A	MAIN	SR	MAIN	SR
Worst Pair	3,6-4,5	3,6-4,5	3,6-7,8	3,6-7,8
<b>ACR-N (dB)</b>	14.2	14.2	40.4	28.9
Freq. (MHz)	4.8	5.1	1992.	2000.
Limit (dB)	59.6	59.1	-22.7	-22.9
Worst Pair	3,6	3,6	3,6	7,8
<b>PS ACR-N (dB)</b>	15.5	15.4	41.2	31.2
Freq. (MHz)	5.0	5.3	1936.	2000.
Limit (dB)	56.0	55.6	-24.3	-25.3



PASS	MAIN	SR	MAIN	SR
Worst Pair	1,2	7,8	1,2	7,8
<b>RL (dB)</b>	4.1	1.8	4.1	1.8
Freq. (MHz)	1914.	1996.	1914.	1996.
Limit (dB)	8.0	8.0	8.0	8.0



Compliant Network Standards:  
 10BASE-T      100BASE-TX      100BASE-T4  
 1000BASE-T    2.5GBASE-T      5GBASE-T  
 10GBASE-T    25GBASE-T      40GBASE-T  
 ATM-25        ATM-51            ATM-155  
 100VG-AnyLan    TR-4              TR-16 Active  
 TR-16 Passive